

## APPLICATION

Power pack is mainly used to supply hydraulic system with hydraulic fluid (oil) with required parameters (pressure and displacement).

The power pack is intended to operate for short periods of time.



## DESCRIPTION OF OPERATION

Standard version of power pack is composed of the oil tank with essential accessories like:

- oil suction filter
- oil filler
- oil level indicator (optional)
- oil drain plug
- pump assembly (electric motor – gear pump), pressure gauge and the block with output connections installed on the power pack.

Standard version of power pack can be extended upon customer's request with the following systems:

- hydraulic control system according to the individual scheme
- other apparatus and hydraulic machines which are not included in data sheet, prior agreed with the manufacturer
- electric control system

## TECHNICAL DATA

### Basic information

Hydraulic fluid	mineral oil			
Operating temperature range	-10 up to +70°C			
<b>Standard fluid filtration</b>	<b>90 μm</b>			
<b>Filtration in version with return-line filter</b>	<b>10 μm</b>			
Fluid viscosity range	10 up to 380 mm <sup>2</sup> /s			
<b>Supply voltage for motor</b>	<b>3 x 400V 50 Hz</b> (other, if agreed)			
<b>Supply voltage for directional control valve</b>	<b>24V DC</b> (other, if agreed)			
Tank type	UBEK 8EV	UBEK 15EV	UBEK 20EV	UBEK 30EV
Tank capacity	8 dm <sup>3</sup>	15 dm <sup>3</sup>	20 dm <sup>3</sup>	30 dm <sup>3</sup>
Difference in oil capacity corresponding to oil level difference max - min	up to 2,3 dm <sup>3</sup>	up to 2,3 dm <sup>3</sup>	up to 2,9 dm <sup>3</sup>	up to 2,9 dm <sup>3</sup>

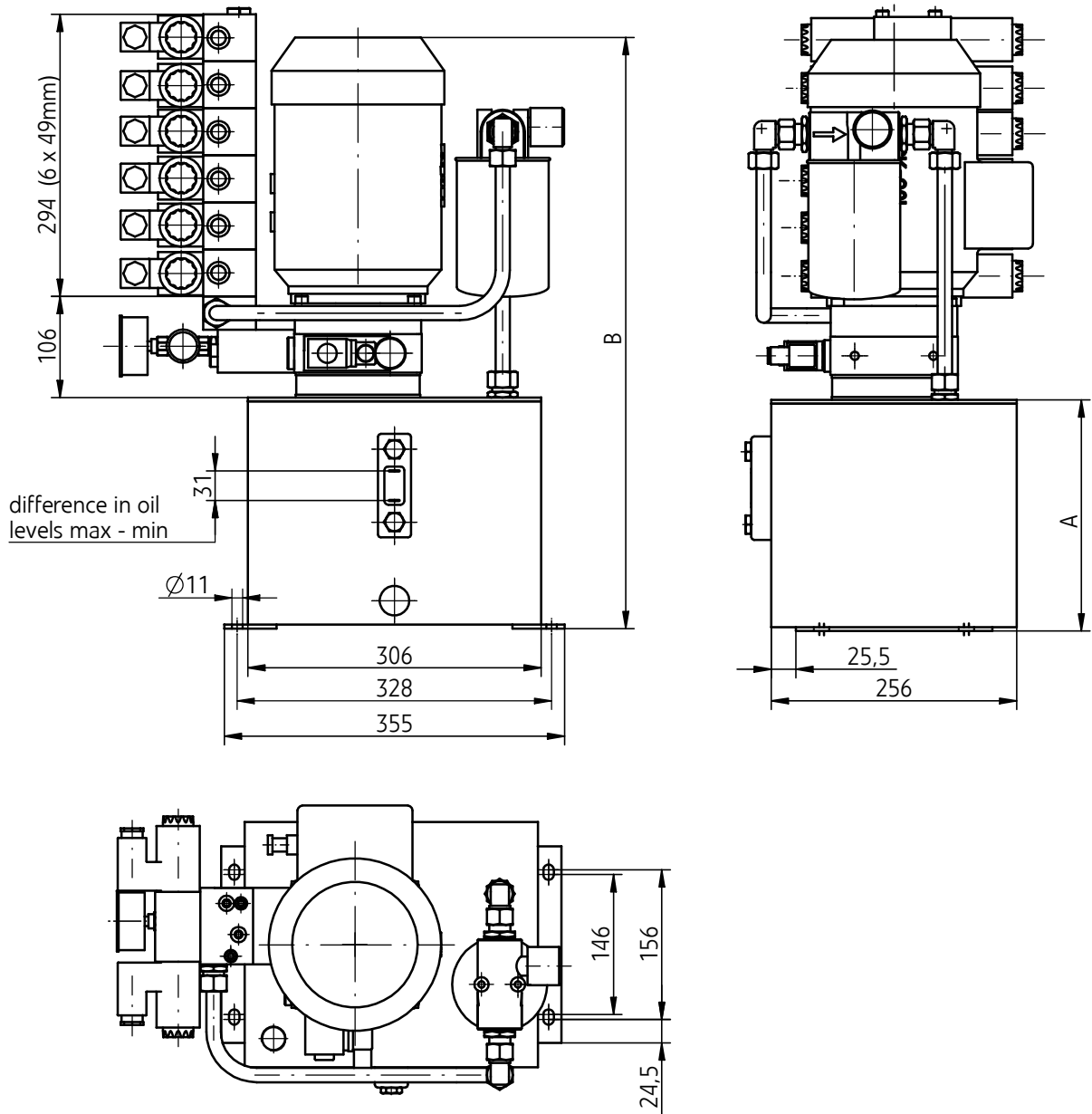
## TECHNICAL DATA

Operating pressure range depending on motor power and type of pump.

Motor type Flange type	Power [ kW ]	Type of pump	Displacement [ cm <sup>3</sup> /revolution]	Pressure [ MPa]	Assembly designation
SKg 71-4B FT85	0,37	G 0,85	0,85	15	01
		G 1,3	1,3	11	02
		G 1,6	1,6	10	03
SKg 80-4A FT100	0,55	G 1,15	1,15	17	04
		G 1,3	1,3	15	05
		G 1,6	1,6	12	06
		G 2,1	2,1	9	07
SKg80-4B FT100	0,75	G 1,3	1,3	20	08
		G 1,6	1,6	16	09
		G 2,1	2,1	12	10
		G 2,6	2,6	10	11
		G 3,2	3,2	8	12
		G 3,7	3,7	7	13
SKg80-4PC FT100	1,1	G 2,1	2,1	19	14
		G 2,6	2,6	15	15
		G 3,2	3,2	12	16
		G 3,7	3,7	11	17
		G 4,2	4,2	9	18
		G 4,9	4,9	8	19
		G 6,0	6,0	7	20
SKg 90L-4 FT115	1,5	G 2,6	2,6	20	21
		G 3,7	3,7	14	22
		G 4,2	4,2	12	23
		G 4,9	4,9	10	24
		G 6,0	6,0	8	25
		G 7,9	7,9	6	26
SKg 90L-4PC FT115	2,2	G 4,2	4,2	18	27
		G 4,9	4,9	16	28
		G 6,0	6,0	13	29
		G 7,9	7,9	10	30
		G 9,8	9,8	8	31
SKg100L-4B FT130	3,0	G 6,0	6,0	17	32
		G 7,9	7,9	13	33
		G 9,8	9,8	10	34
SKg100L-4PC FT130	4,0	G 7,9	7,9	17	35
		G 9,8	9,8	14	36

# OVERALL AND CONNECTION DIMENSIONS

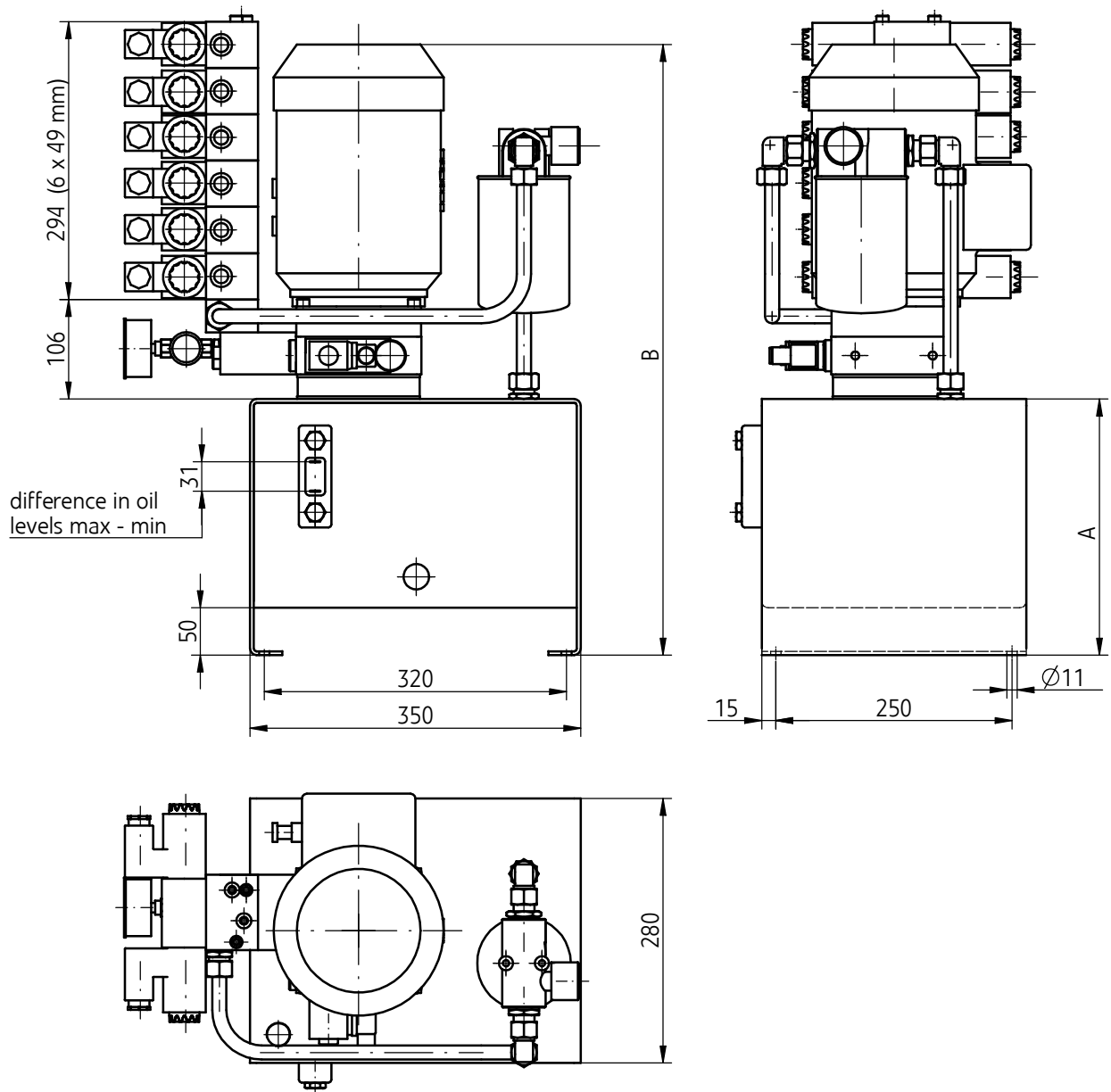
Fitting on the tanks: UBEK 8EV; UBEK 15EV



Tank type	Motor type				A	B
	SkG71	SkG80	SkG90	SkG100		
UBEK 8EV	●				133	429
UBEK 8EV		●			133	461
UBEK 8EV			●		133	512
UBEK 8EV				●	133	571
UBEK 15EV	●				237	533
UBEK 15EV		●			237	565
UBEK 15EV			●		237	616
UBEK 15EV				●	237	675

## OVERALL AND CONNECTION DIMENSIONS

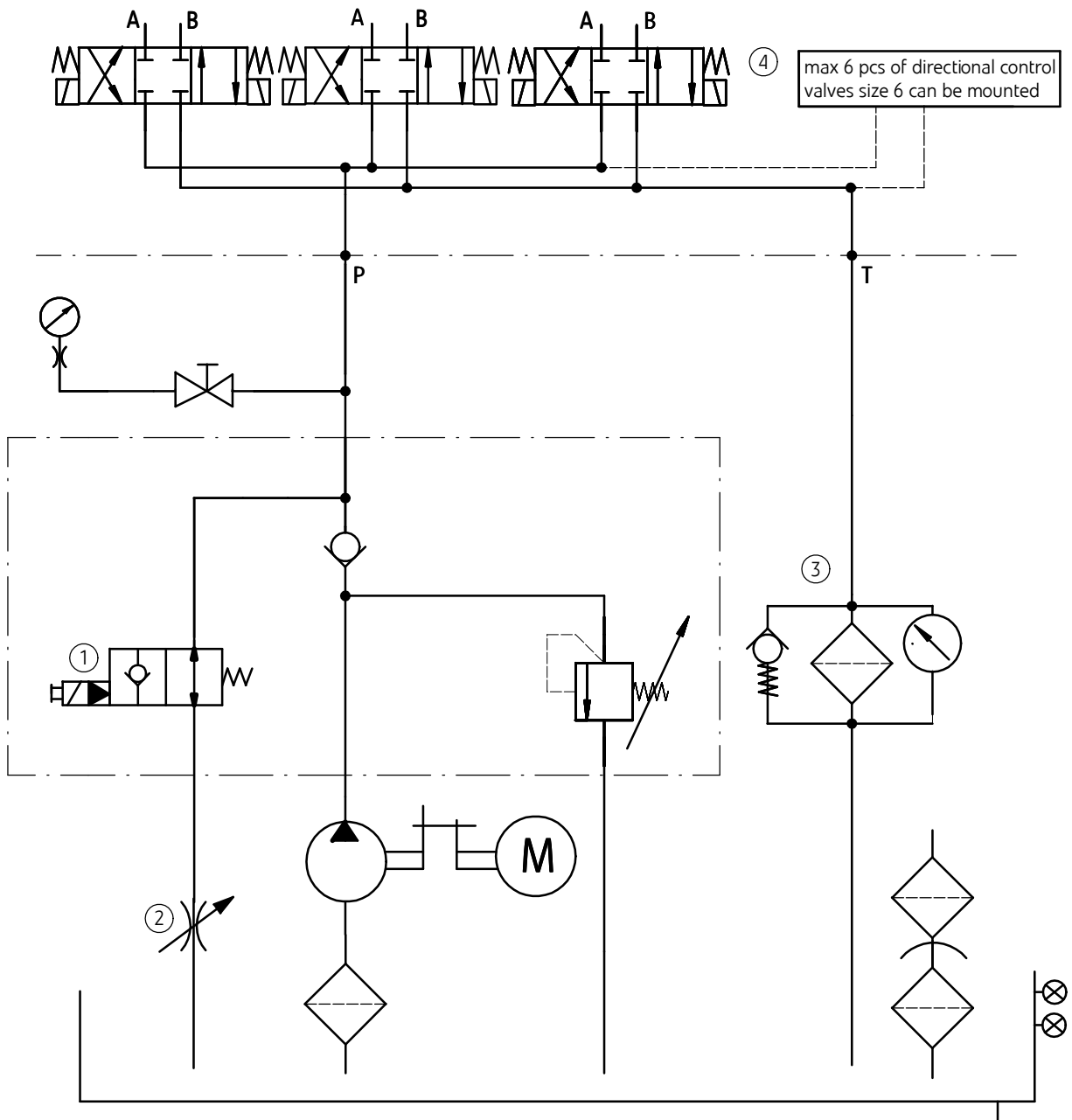
Fitting on the tanks: UBEK 20EV; UBEK 30EV



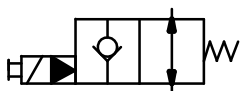
Tank type	Motor type				A	B
	Skg71	Skg80	Skg90	Skg100		
UBEK 20EV	●				267	563
UBEK 20EV		●			267	595
UBEK 20EV			●		267	646
UBEK 20EV				●	267	705
UBEK 30EV	●				397	693
UBEK 30EV		●			397	725
UBEK 30EV			●		397	776
UBEK 30EV				●	397	835

## SCHEMES

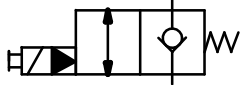
### Hydraulic scheme for power pack



### Hydraulic schemes (options) for directional control valve - pos. 1



option normally-open - designation ...NO...



option normally-closed - designation ...NC...

- 1 - Directional control valve - options\*:
  - **normally-open** - designation UHWZ...- NO -...
  - **normally-closed** - designation UHWZ...- NC -...
- 2 - Throttle valve - options\*:
  - **with throttle valve** - designation UHWZ...- D -...
  - **without throttle valve** - no designation
- 3 - Return-line filter - options\*:
  - **with return-line filter** - designation UHWZ...- F -...
  - **without return-line filter** - no designation
- 4 - Directional control valve size 6 to be mounted - connections **A, B**: G 3/8

#### **Note:**

(\*) - Options showed on the scheme are in bold

## HOW TO ORDER

<b>UHWZ</b>	+	+	+	+	+	+
-------------	---	---	---	---	---	---

### Tank size

UBEK 8EV	= 8
UBEK 15EV	= 15
UBEK 20EV	= 20
UBEK 30EV	= 30

### Type of pump

G 0,85	= 0,85	G 3,7	= 3,7
G 1,15	= 1,15	G 4,2	= 4,2
G 1,3	= 1,3	G 4,9	= 4,9
G 1,6	= 1,6	G 6,0	= 6,0
G 2,1	= 2,1	G 7,9	= 7,9
G 2,6	= 2,6	G 9,8	= 9,8
G 3,2	= 3,2		

### Motor power

0,37 kW	= 0,37
0,55 kW	= 0,55
0,75 kW	= 0,75
1,10 kW	= 1,1
1,50 kW	= 1,5
2,20 kW	= 2,2
3,00 kW	= 3,0
4,00 kW	= 4,0

### Nominal size for hydraulic elements installed

(applied to elements connections nominal size 6 to be mounted - pos. 4 according to the scheme on page 5)

NS6	= 6
-----	-----

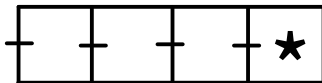
### Designed version of power pack

without connection for directional control valve (standard version)	= no designation
with connection for one directional control valve	= R1
with connection for two directional control valves (parallel connection)	= R2
with connection for three directional control valves (parallel connection)	= R3
with connection for four directional control valves (parallel connection)	= R4
with connection for five directional control valves (parallel connection)	= R5
with connection for six directional control valves (parallel connection)	= R6

### Version of directional control valve

(applied to directional control valve pos. 1 according to the scheme on page 5)

normally-open	= NO
normally-closed	= NC



Further requirements in clear text (to be agreed with the manufacturer)

**Successive version of power pack**  
 (given by the manufacturer when order confirmed) = XXXX

**Return-line filter**  
 (applied to filter pos. 3 according to the scheme on page 5)  
 without return-line filter = no designation  
 with return-line filter = F

**Throttle valve**  
 (applied to throttle valve pos. 2 according to the scheme on page 5)  
 without throttle valve = no designation  
 with throttle valve = D

**NOTES:**

Power pack should be ordered according to the above coding.  
 The type, quantity and placing hydraulic elements (directional control valves, valves and other) must be specified on hydraulic scheme or in other clear way.  
 Coding example: UHWZ-15-2,6-1,5-6-R4-NO-F-XXXX

PONAR Silesia S.A.  
ul. Wojska Polskiego 29  
34-100 Wadowice  
tel. +48 33 823 44 41 - 45  
fax. +48 33 823 39 36  
[www.ponar-silesia.pl](http://www.ponar-silesia.pl)

