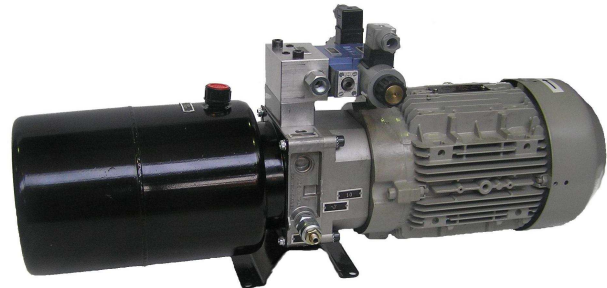


APPLICATION

Power packs type UHKZ... are designed to drive and control hydraulic receivers (cylinders and hydraulic motors). They are used in moveable machines as a drive for small presses, lifts and shop machines.

The power pack is intended to operate for short periods of time.



DESCRIPTION OF OPERATION

Standard version of power pack is composed of the oil tank with essential accessories like:

- oil suction filter
- oil filler
- oil drain plug
- pump assembly (electric motor – gear pump), pressure gauge and the block with output connections.

Standard version of the power pack can be extended upon customer's request with the following systems:

- hydraulic control system according to the individual scheme
- other apparatus and hydraulic machines which are not included in data sheet, prior agreed with the manufacturer
- electric control system.

TECHNICAL DATA

Basic information

Hydraulic fluid	mineral oil					
Operating temperature range	-10 up to +70 °C					
Standard fluid filtration	90 μm					
Fluid viscosity range	10 up to 380 mm ² /s					
Supply voltage for motor	3 x 400V 50 Hz (other, if agreed)					
Supply voltage for directional control valve	24V DC (other, if agreed)					
Tank type	2,5A	5B	10B	12B	3L	5L
Material for a tank	steel			plastic		
Nominal capacity of a tank	2,5 dm ³	5 dm ³	10 dm ³	12 dm ³	3 dm ³	5 dm ³

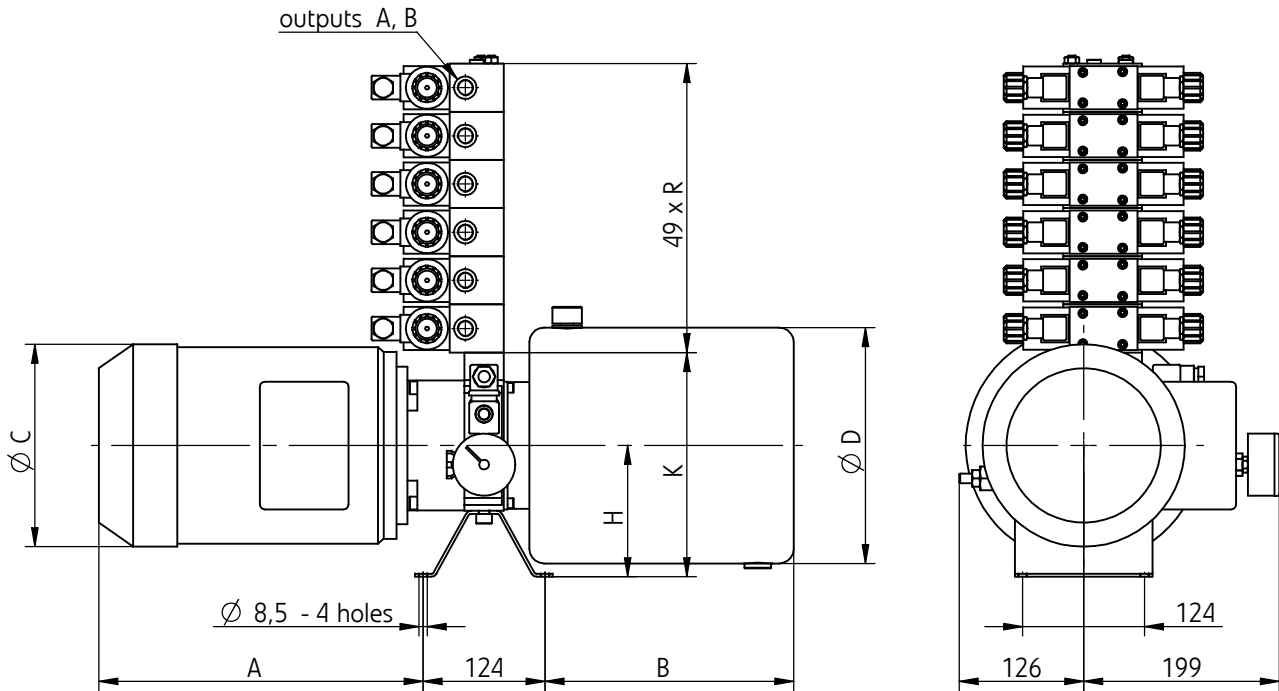
TECHNICAL DATA

Operating pressure range depending on motor power and type of pump.

Motor type Type of flange	Power [kW]	Type of pump	Displacement [cm ³ /revolution]	Pressure [MPa]	Assembly designation
SKg 71-4B FT85	0,37	G 0,85	0,85	15	01
		G 1,3	1,3	11	02
		G 1,6	1,6	10	03
SKg 80-4A FT100	0,55	G 1,15	1,15	17	04
		G 1,3	1,3	15	05
		G 1,6	1,6	12	06
		G 2,1	2,1	9	07
SKg80-4B FT100	0,75	G 1,3	1,3	20	08
		G 1,6	1,6	16	09
		G 2,1	2,1	12	10
		G 2,6	2,6	10	11
		G 3,2	3,2	8	12
		G 3,7	3,7	7	13
SKg90S-4 FT115	1,1	G 2,1	2,1	19	14
		G 2,6	2,6	15	15
		G 3,2	3,2	12	16
		G 3,7	3,7	11	17
		G 4,2	4,2	9	18
		G 4,9	4,9	8	19
		G 6,0	6,0	7	20
SKg 90L-4 FT115	1,5	G 2,6	2,6	20	21
		G 3,7	3,7	14	22
		G 4,2	4,2	12	23
		G 4,9	4,9	10	24
		G 6,0	6,0	8	25
		G 7,9	7,9	6	26
SKg 100L-4A FT130	2,2	G 4,2	4,2	18	27
		G 4,9	4,9	16	28
		G 6,0	6,0	13	29
		G 7,9	7,9	10	30
		G 9,8	9,8	8	31
SKg100L-4B FT130	3,0	G 6,0	6,0	17	32
		G 7,9	7,9	13	33
		G 9,8	9,8	10	34
SKg100L-4PC FT130	4,0	G 7,9	7,9	17	35
		G 9,8	9,8	14	36

OVERALL AND CONNECTION DIMENSIONS

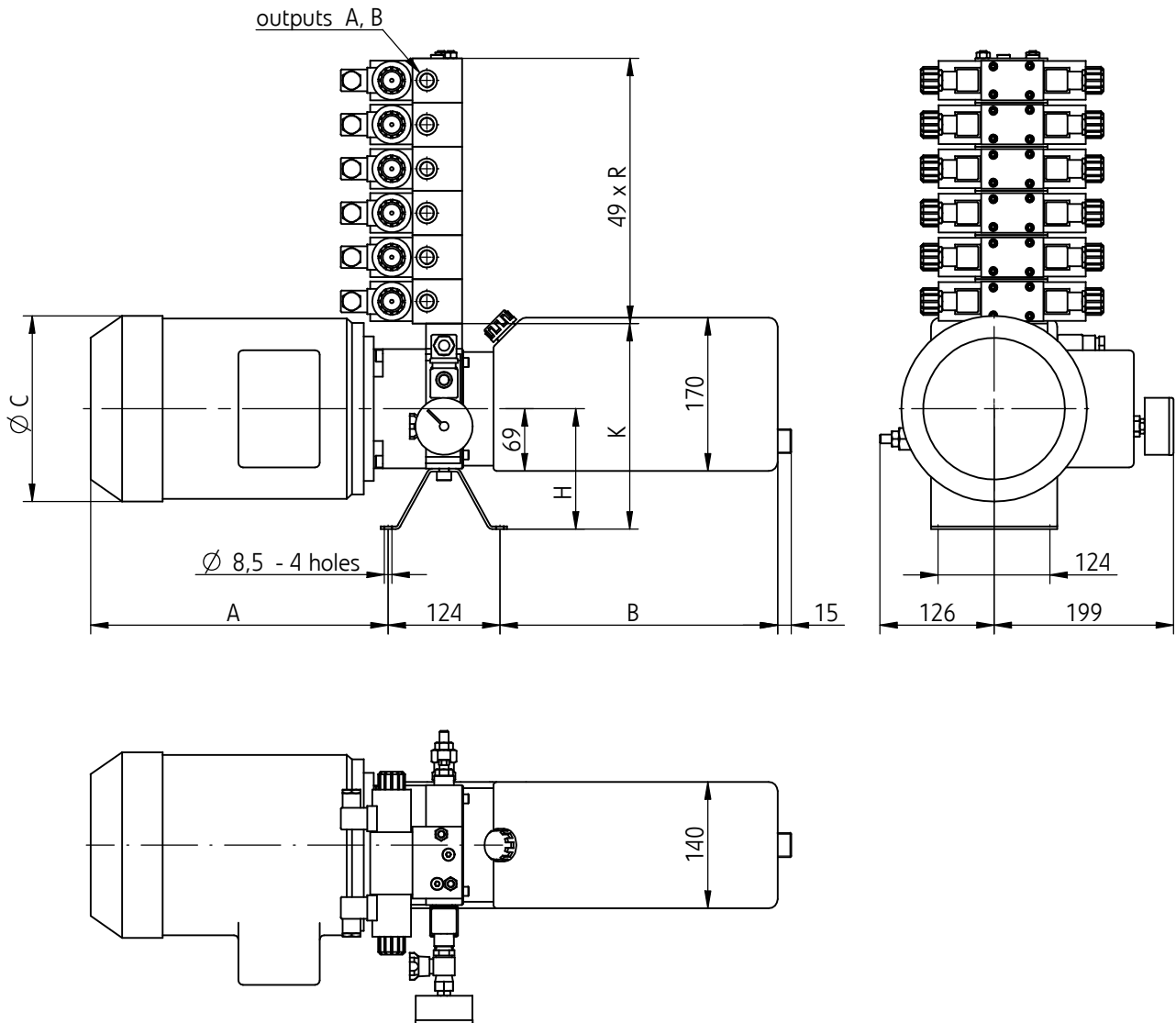
Fitting on the tanks: 2,5A, 5B, 10B, 12B



Motor	Tank	A	B	ØC	ØD	H	K
SKg71-4B	2,5A	188	193	145	130	112	206
	5B		233		180		
	10B		220		220	134	228
	12B		253		240		
SKg80-4A SKg80-4B	2,5A	213	193	163	130	112	206
	5B		233		180		
	10B		220		220	134	228
	12B		253		240		
SKg90S-4 SKg90L-4	2,5A	271	193	180	130	112	206
	5B		233		180		
	10B		220		220	134	228
	12B		253		240		
SKg100L-4A SKg100L-4A	2,5A	328	193	203	130	134	256
	5B		233		180		
	10B		220		220		
	12B		253		240		
SKg100L-4PC	2,5A	363	193	203	130	134	256
	5B		233		180		
	10B		220		220		
	12B		253		240		

OVERALL AND CONNECTION DIMENSIONS

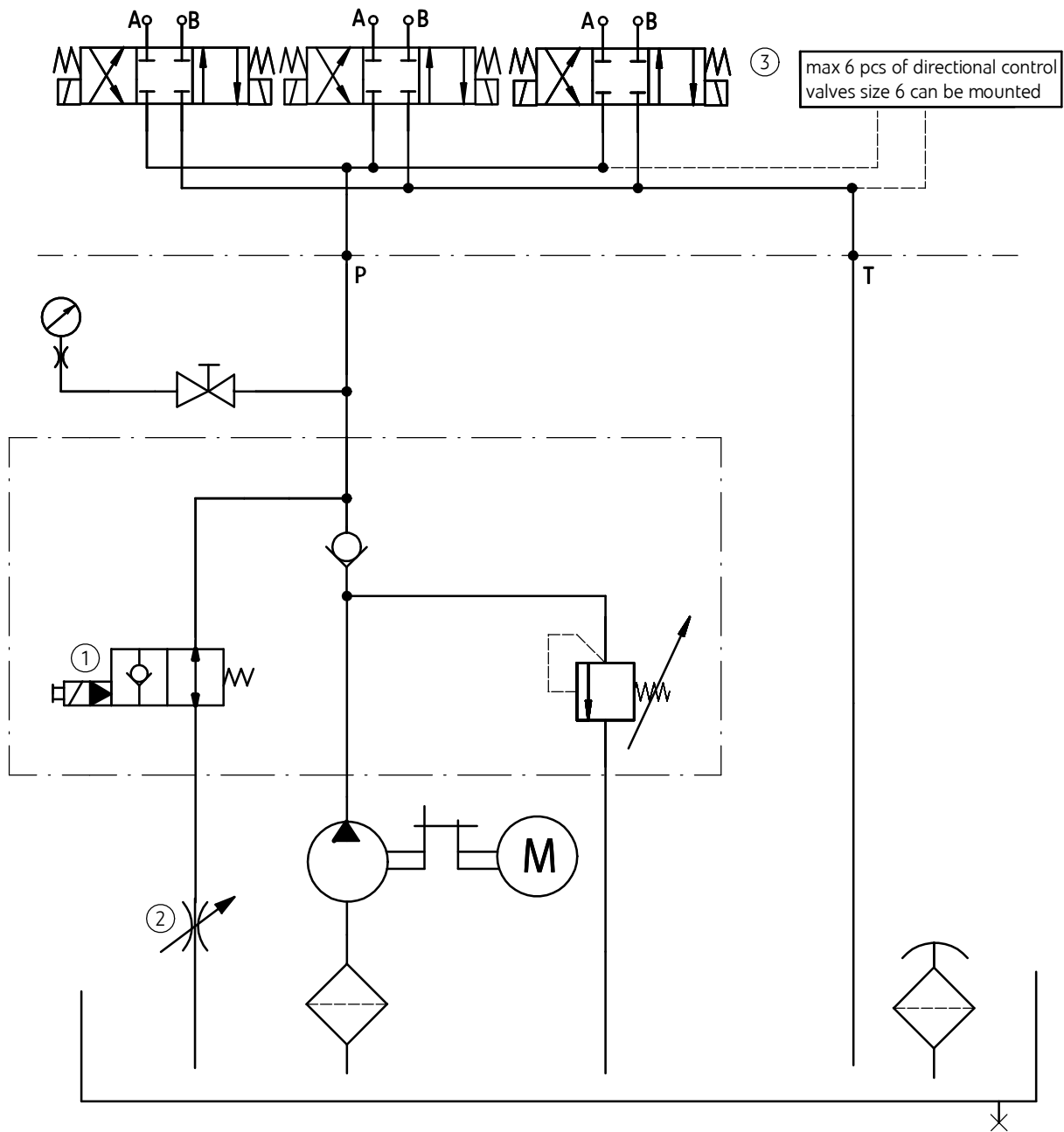
Fitting on the tanks: 3L, 5L



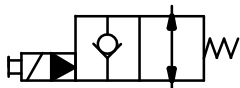
Motor	Tank	A	B	ØC	H	K
SkG71-4B	3L	188	208	145	112	206
	5L		308			
SKg80-4A SKg80-4B	3L	213	208	163	112	206
	5L		308			
SKg90S-4 SKg90L-4	3L	271	208	180	112	206
	5L		308			
SKg100L-4A SKg100L-4A	3L	328	208	203	134	256
	5L		308			
SKg100L-4PC	3L	363	208	203	134	256
	5L		308			

SCHEMES

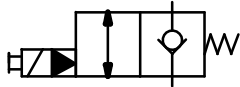
Hydraulic scheme for power pack



Hydraulic schemes (options) for directional control valve - pos. 1



option normally-open - designation ...**NO**...



option normally-closed - designation ...**NC**...

- 1 - Directional control valve - options*:
 - **normally-open** - designation UHKZ...- **NO** -...
 - **normally-closed** - designation UHKZ...- **NC** -...
- 2 - Throttle valve - options*:
 - **with throttle valve** - designation UHKZ...- **D** -...
 - **without throttle valve** - no designation
- 3 - Directional control valve size 6 to be mounted - connections **A, B**: G 3/8

Note:

(*) - Options showed on the scheme are in bold

HOW TO ORDER

UHKZ	+	+	+	+	+	+
-------------	---	---	---	---	---	---

Tank size		
steel	2,5A	= 2,5
steel	5B	= 5
steel	10B	= 10
steel	12B	= 12
plastic	3L	= 3L
plastic	5L	= 5L

Type of pump			
G 0,85	= 0,85	G 3,7	= 3,7
G 1,15	= 1,15	G 4,2	= 4,2
G 1,3	= 1,3	G 4,9	= 4,9
G 1,6	= 1,6	G 6,0	= 6,0
G 2,1	= 2,1	G 7,9	= 7,9
G 2,6	= 2,6	G 9,8	= 9,8
G 3,2	= 3,2		

Motor power	
0,37 kW	= 0,37
0,55 kW	= 0,55
0,75 kW	= 0,75
1,10 kW	= 1,1
1,50 kW	= 1,5
2,20 kW	= 2,2
3,00 kW	= 3,0
4,00 kW	= 4,0

Nominal size for hydraulic elements installed	
(applied to elements connections nominal size 6 to be mounted pos. 3 according to the scheme on page 5)	
NS6	= 6

Designed version of power pack	
without connection for directional control valve (standard version)	= no designation
with connection for one directional control valve	= R1
with connection for two directional control valves (parallel connection)	= R2
with connection for three directional control valves (parallel connection)	= R3
with connection for four directional control valves (parallel connection)	= R4
with connection for five directional control valves (parallel connection)	= R5
with connection for six directional control valves (parallel connection)	= R6

Version of directional control valve	
(applied to directional control valve pos. 1 according to the scheme on page 5)	
normally-open	= NO
normally-closed	= NC



Further requirements in clear text (to be agreed with the manufacturer)

Successive version of power pack

(given by the manufacturer when order confirmed) = XXXX

Throttle valve

(applied to throttle valve pos. 2 according to the scheme on page 5)

without throttle valve = no designation

with throttle valve = D

NOTES:

Power pack should be ordered according to the above coding.

The type, quantity and placing hydraulic elements (directional control valves, valves and other) must be specified on hydraulic scheme or in other clear way.

Coding example: UHKZ-12-4,2-1,5-6-R4-NO-D-XXXX

PONAR Silesia S.A.
ul. Wojska Polskiego 29
34-100 Wadowice
tel. +48 33 823 44 41 - 45
fax. +48 33 823 39 36
www.ponar-silesia.pl

